



Puspresnas
Pusat Prestasi Nasional

iGeo



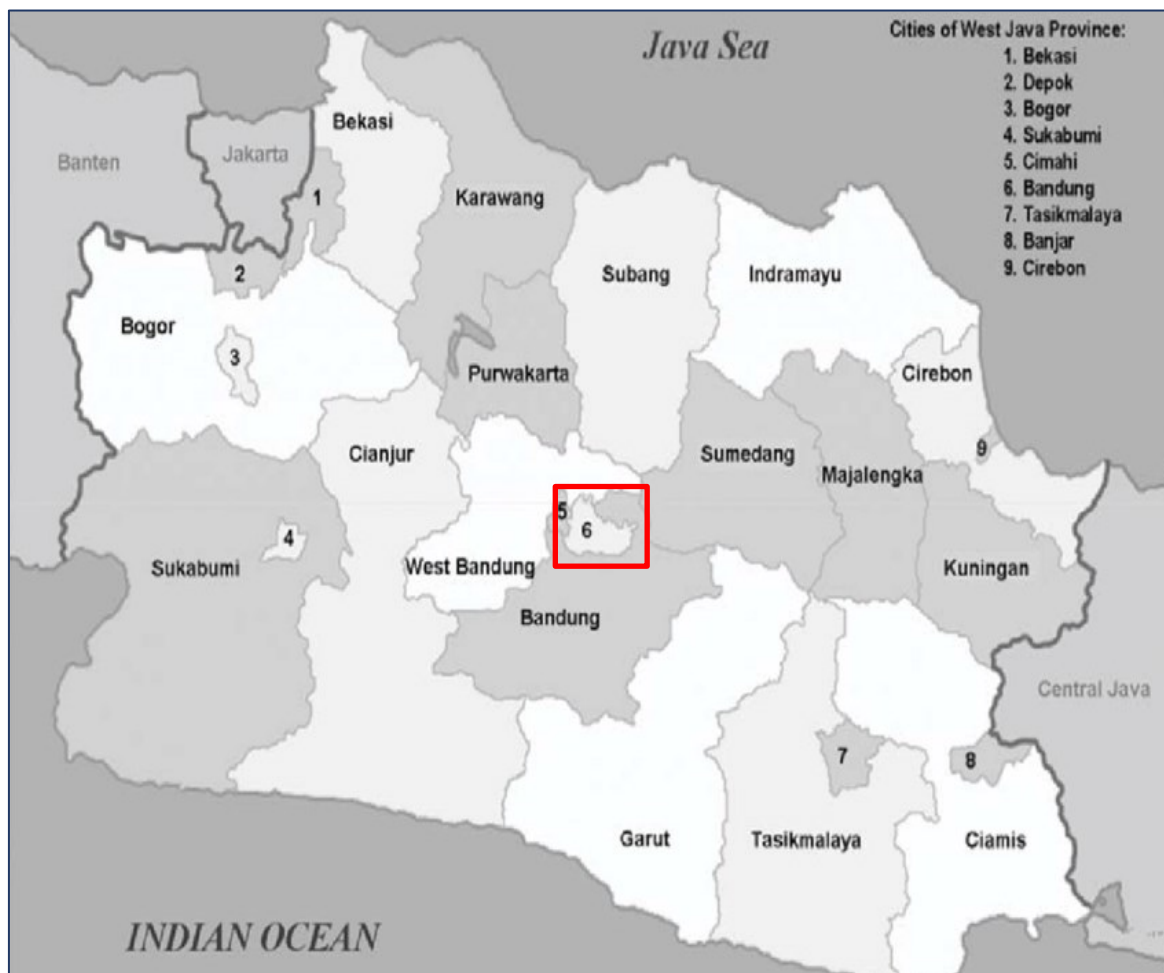
Marcapada



Introduction to Field Work Exercise

Bandung, 9 August 2023

Even though its 'small', Bandung is one of the largest and most well developed cities in Indonesia



Fun Facts about Bandung!



Home to...

2,461,553 People



Has a population density of...

14,713 per km²



Has a GDP of...

U\$ 20 Billion



Has a per capita GDP of...

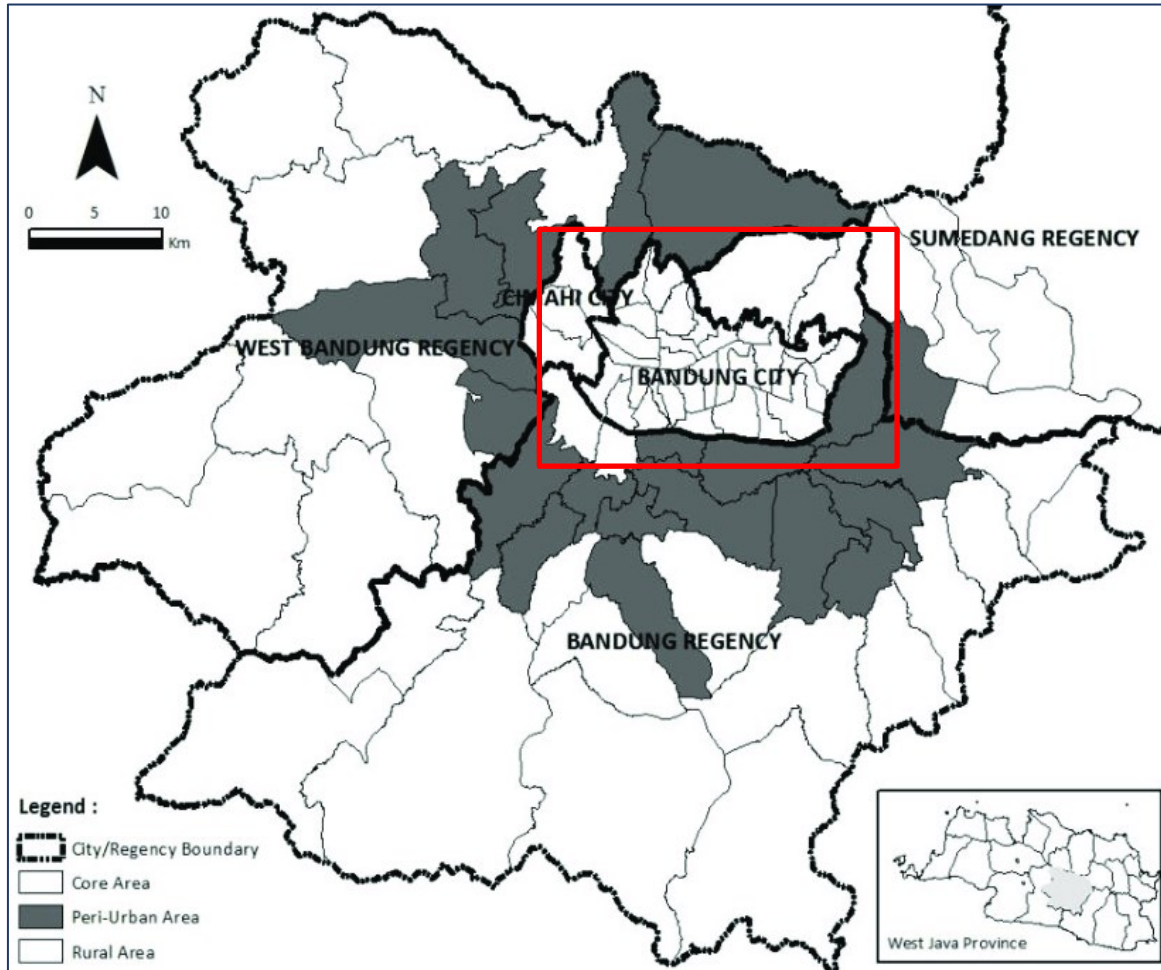
U\$ 8,160/capita



Has the...

First HSR in Southern Hemisphere

It's also the nucleus of the Greater Bandung metropolitan area



Greater Bandung

Greater Bandung is a **metropolitan area in West Java** that consist of 5 cities and regencies inside the 'bandung basin' which include:

- Bandung City
- Cimahi City
- Bandung Regency
- West Bandung Regency
- Sumedang Regency (partially)



Home to...

2,461,553 People



Has a GDP of...

U\$ 20 Billion



Has a population density of...

14,713 per km²



Has a per capita GDP of...

U\$ 8,160/capita



It is the...

Biggest metropolitan area in West Java!



Bandung Acts as the Core!

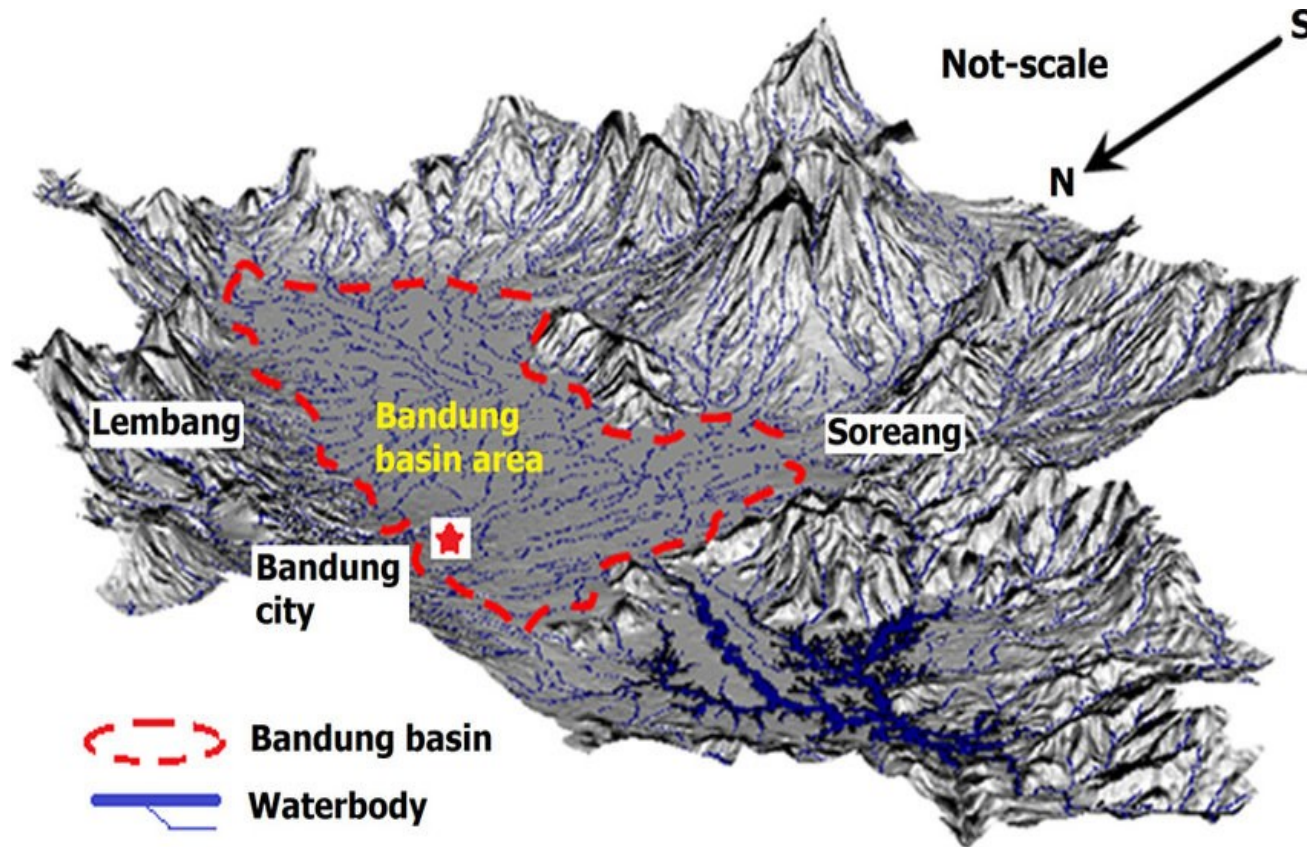


40% of the economy is from Bandung



30% of the residents live in Bandung

Geographically, Bandung is shaped like a bowl!



Geomorphology



West Java's Central Depression

Van Bemmelen (1949) divides West Java into 6 zones. Bandung has 2 zones in its area, which is the **Central Depression** and the **Quaternary Volcanoes Zone**.



Part of Bandung Zone

Bandung represents the **central depression zone** that has collapsed due to uplift at the end of the Tertiary Period. It is then **surrounded with young volcanism**



Volcanism Shapes Bandung!

The regional stratigraphy is characterized by the assemblage of **juvenile volcanoes** and **recent volcanic sediments** from the Quaternary Period

This has given Bandung several key advantages



Clean Mountain Air and a Picturesque Landscape

Because Bandung is located in the highlands of West Java, it has a cooler climate compared to the rest of Indonesia. Another side effect of this mountainous terrain is the picturesque landscape of Bandung which is a major boom to the tourism and hospitality sector.



Fertile Soil Encourages Agriculture

Bandung's soil is considered a volcanic soil which is very fertile because it contains multiple minerals that are beneficial for plant growth. This soil comes from the weathering of volcanic materials in the Bandung basin over thousands of years



Easy Source of Water

Due to its bowl-like shape, multiple highlands surround the city of Bandung. Thus it has multiple small rivers feeding into the city ensuring that Bandung residents always have easy access to clean water that can be used for daily activities.

However, there are several significant downsides



High Natural Disaster Risk

Bandung's steep slopes and mountainous terrain makes it more susceptible to many forms of natural hazards such as landslides, earthquakes, volcanic eruption, and flash floods. This makes disaster resilient planning, which is more complicated than regular planning mandatory in Bandung.



Hard to Develop

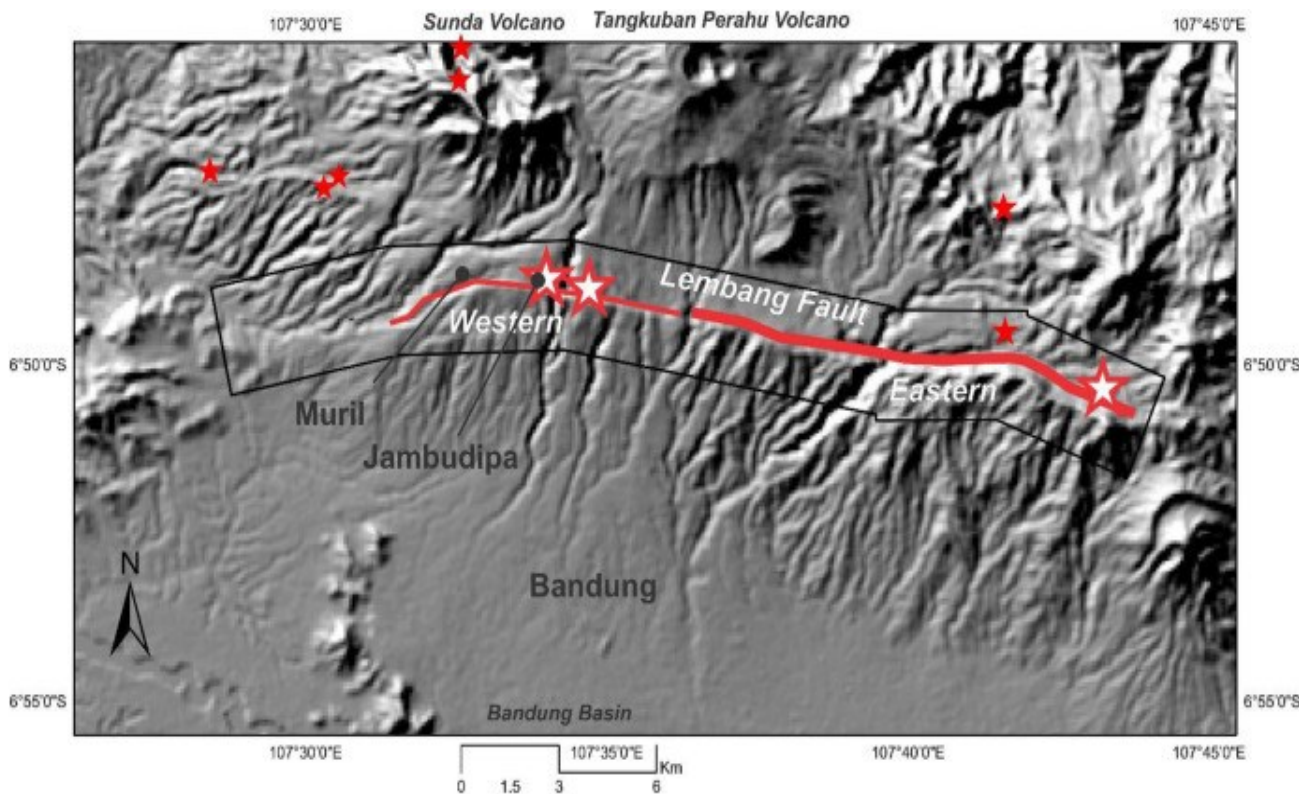
Bandung is surrounded by natural barriers in the form of hills, valleys, and other geological formations, such as claystone from ancient lacustrine sediments. This makes building in Bandung more complicated. Add to that the steep slopes and disaster risk, it becomes a nightmare for urban planners to plan and build an efficiently functioning city.



Constrained Urban Growth

Besides hampering growth, the natural barriers surrounding Bandung also prevents it from sprawling into a larger city. This might seem good on paper, but this also prevents Bandung from growing to accommodate the increased number of residents living in the city!

Speaking of geology... there is a sleeping monster in Bandung



! Lembang Fault

Just like Smaug's hibernation in the Lord of The Rings, Bandung also has a "sleeping monster" hiding in its northern mountains, the Lembang Fault.

High Risk of Earthquakes!



The Lembang Fault is fairly active and represents a constant danger to Bandung. Because of that, new developments are designed to be earthquake resistant

Can Also Trigger Eruption!



The Lembang fault is located close to the still active Tangkuban Parahu Volcano. However, sufficiently large movement of the fault can trigger volcanism

Despite these challenges, Bandung still manages to prosper

Great Places



Tangkuban Perahu Mountains

One of the most popular mountains in Bandung



Cliffs of Tebing Keraton

One of the most popular mountains in Bandung



Kawah Putih Lake

Its a volcanic crater where the water is white

Interesting Culture



Saung Angklung Udjo

Preserving heritage of angklung as a musical instrument



Mayang Sunda Art Centre

Preserving heritage of traditional sundanese dance and culture

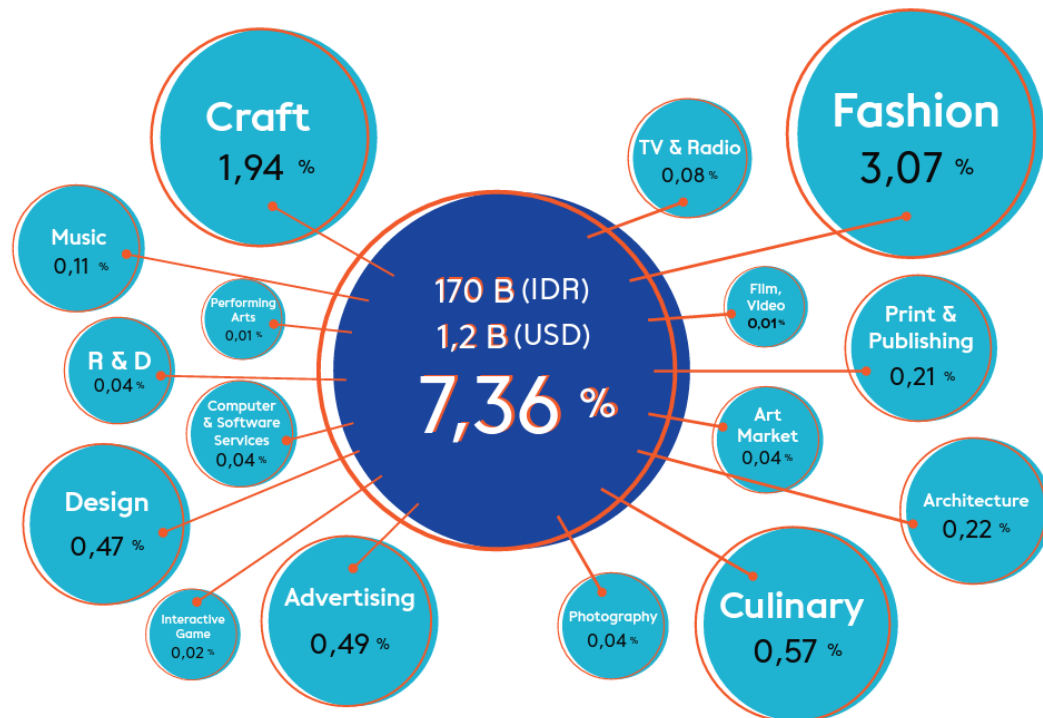


Cirendeou Village

Stuck in time, providing a glimpse of traditional Sundanese culture

Because of its great culture, Bandung was declared as a Creative City by UCCN in 2015

Contributions (2018)



*Contribution to Bandung's GDP

Creative Hubs



Bandung Creative Hub

Forum for incubating creativity, education and other activities in the creative industry sector



NuArt Sculture Park

One of the largest sculpture parks in Indonesia



Fine Art & Design Faculty, ITB

Preserving creative culture with formal education of fine art and design in Bandung





Bumi Pasundan Terlahir Ketika Tuhan Sedang Tersenyum

M.A.W. Brouwer



Puspresnas
Pusat Prestasi Nasional

iGeo



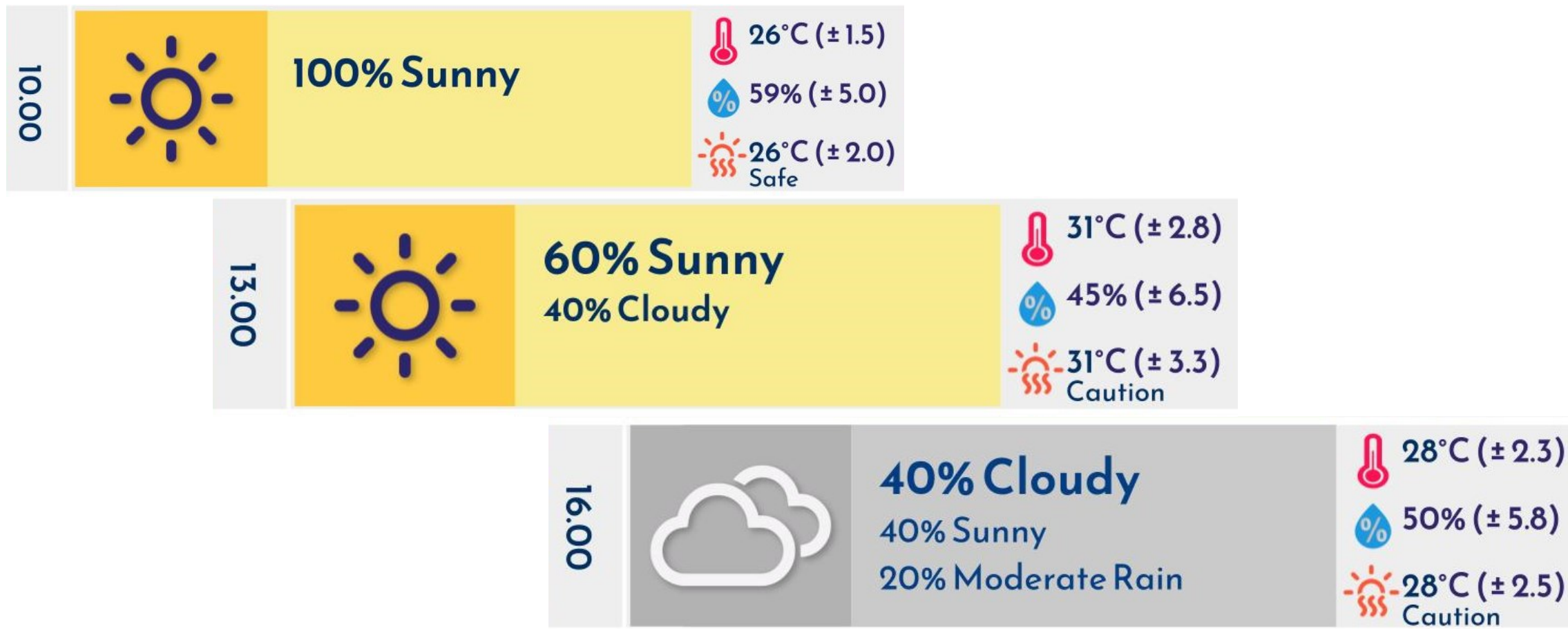
Marcapada



Technical Briefing for Field Work Exercise

Bandung, 9 August 2023

The weather will be sunny and hot!



Rules for Field Work Exercise

- FWE will be conducted at 10th of August, full day
 - FWE Task 1 at field site at morning - afternoon
 - FWE Task 2 at class in ITB at afternoon
- Individual exercise
 - No communication between participants & team leaders
- No mobile phones, electronic devices, and watch can be used
 - **Disqualify** if found
- Seek help from volunteers (Green Nametag)
- There is timekeeper from volunteers
 - Don't worry about times

What you should bring to the field site

- Water (600 ml) → We have water stations at field
- Hat
- Wear sneakers
- Umbrella / Raincoat
- Clipboard to write on
- Writing Stationaries
- Sunscreen (if needed)
- Your own medication (if needed)
- Pocket-size English Dictionary (if needed) – this will be checked
 - No written and inserted notes



Detailed Timetable

Agenda	Team A	Team B	Team C
Departure from Savoy Homann	07:45		
Field Briefing & Preparation	08:30 - 08:50		
FEW 1 Observation	08:50 - 12:25	08:50 - 12:25	08:50 - 12:45
Lunch	12:25 - 13:20	12:25 - 13:20	12:45 - 13:40
FWE 1 Observation	13:20 - 14:25	13:20 - 14:25	13:40 - 14:25
Preparation for Departure	14:25 - 14:40		
Departure from FWE site	14:40 - 15:15		
FWE Analysis	15:15 - 16:45 / 17:05 (for non English speakers)		

Ready yourself at 07.30, as the Bus will leave at 07.45 sharp. If left behind, you will not able to participate in the FWE. Please go to the toilet before getting on to the bus.

Bus Arrangement

Team A (Bus 1 & 2)	Team B (Bus 3 & 4)	Team C (Bus 5 & 6)
Student number ends with 01	Student number ends with 02	Student number ends with 03
190104 – 191404* *For student number ends with 04	191504 – 192804* *For student number ends with 04	192904 – 194504* *For student number ends with 04

Example:

190701 → Team A

194304 → Team C



Puspresnas
Pusat Prestasi Nasional

iGeo



Any Other Question?